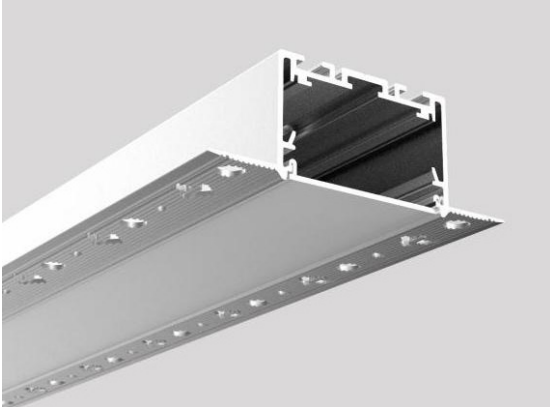


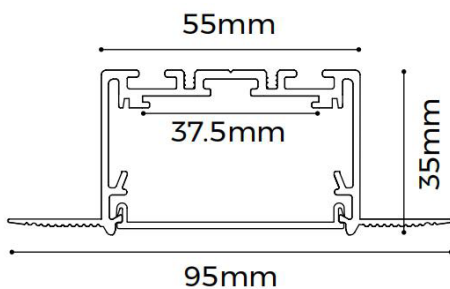
LINPROF-A 5535 Trimless Profile



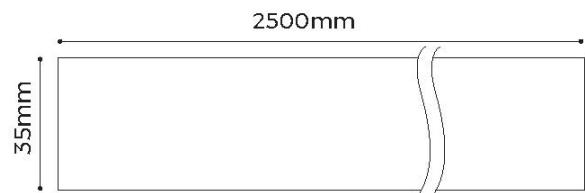
The LINPROF35 is a recessed trimless profile for plasterboard ceilings

The profile is fixed to the underside of the plasterboard with wings provided for fixing. There are two protruding walls on the profile to allow for skimming a straight line finish on the ceiling

A range of accessories are available to allow creation of long continuous lines or right angle combinations



Model No	NL_HC_LINP35_2.5M
Material	AL6063-T5
Surface	
Processing	Spray painted RAL 9003 white
Diffuser	Opal Polycarbonate
Light	
Transmittance	>86%
Heat Dissipation	Max 38W/m
Lumens	N/A
LED Driver	Remote
Dimmable	Depending on driver chosen
Light Source	LED flexstrip (excluded)



Length - 2500mm