

Apex 3030 Aluminium Channel



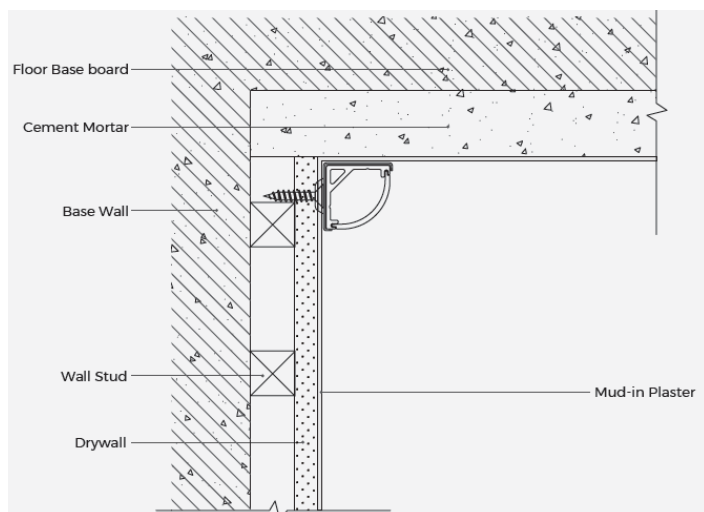
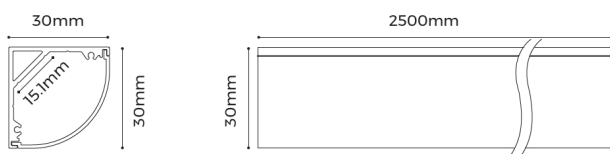
The APEX 3030 aluminium channel is supplied in 2.5m lengths and comes complete with white diffuser cover for consistent homogenous light effect

The APEX 3030 with its right angle format is designed to fit snugly into corners

It is a good option to use where a mix of horizontal and vertical illumination are required on surfaces

Channel is also provided with 2x PC end caps

It can be used with a range of led strips but ideally with strips with narrow led spacing to maintain 'dot free' effect. Also to be used with led strips that are a maximum of 15mm in width



Model No **NL_HC_APEX3030_PROFILE**

Material AL6063-T5

Surface Processing Anodizing

Diffuser Opal Polycarbonate

Light Transmittance >85%

Heat Dissipation Max 15W/m

Accessories

Mounting clip

NL_HC_APEX3030_FCSS
[4 pieces per set]



End caps

End caps silver [without hole]

NL_HC_APEX3030_ECH
[2 pieces per set]



End caps silver [with hole]

NL_HC_APEX3030_EC
[2 pieces per set]

