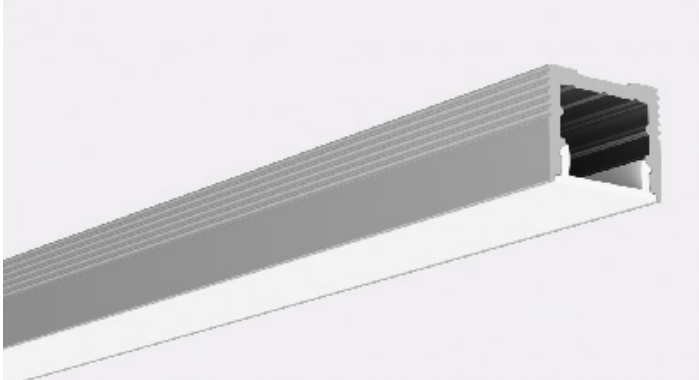


Alba 1613 Aluminium Channel

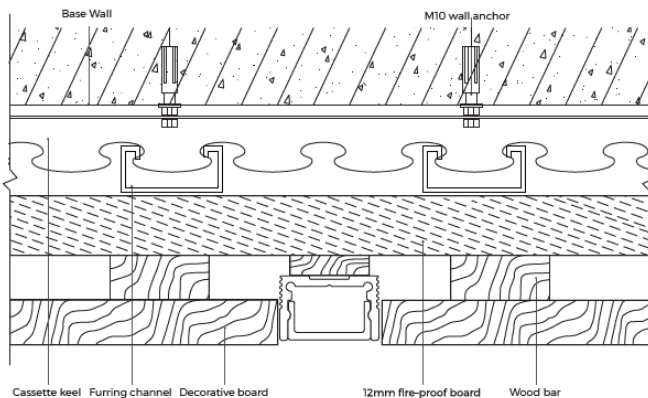
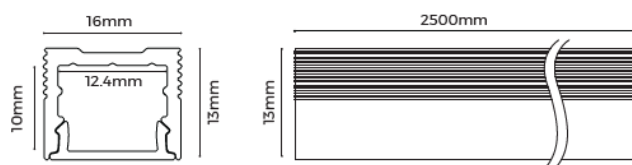


The Alba1613 aluminium channel is supplied in 2.5m lengths and comes complete with white diffuser cover for consistent homogenous light effect

The profile can be used as a surface mount fitting or can be flush mounted in joinery that has been routed out to suit dimensions below

Channel is also provided with 2x PC end caps

It can be used with a range of led strips but ideally with strips with narrow led spacing to maintain 'dot free' effect



Model No NL_HC_ALBA25_D_LS1613

Material AL6063-T5

Surface Processing Anodizing

Diffuser Opal Polycarbonate

Light Transmittance >60%

Heat Dissipation Max 14W/m

Accessories

Mounting clip

NL_ALBA_MOUNTCLIP



Adjustable mounting clips

NL_ALBA_180CLIP
0-180 deg adjustable



NL_ALBA_90CLIP
0-90 deg adjustable



End caps

NL_ALBA_ECAP
Silver end caps without holes [2 pieces per set]

NL_ALBA_ECAP_WH
Silver end caps with holes [2 pieces per set]